

1, Install the CSR BlueSuite 2.5.8 software on your PC(remember its installation path).

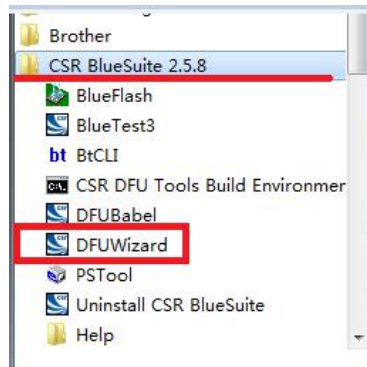


2, Restart your PC after it is successfully installed.

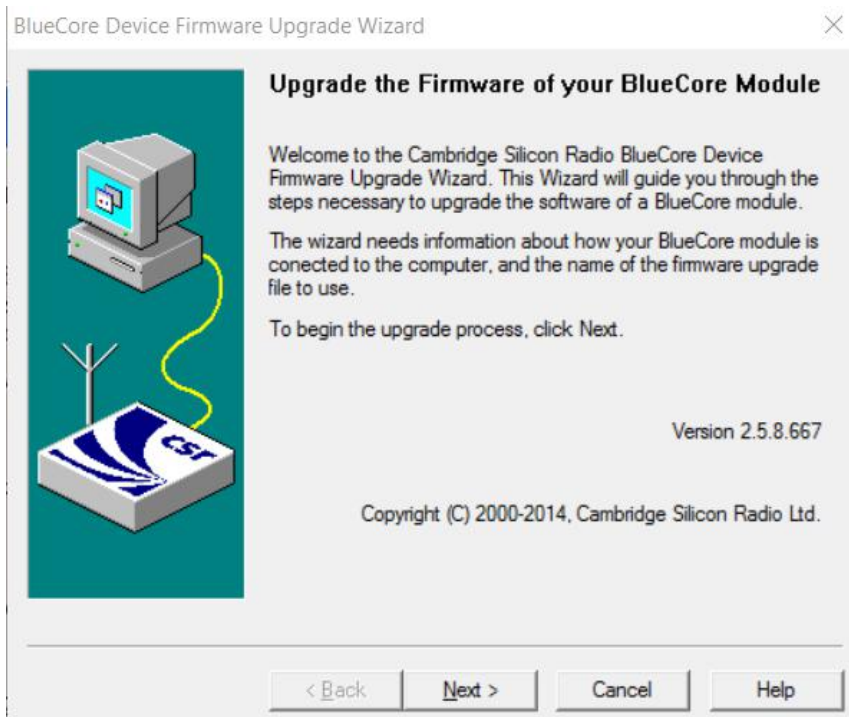
3, Connect Priva III to PC via micro data/charging cable(included) => switch button to ON => press and hold MFB for 15s, BLUE LED is on, now Priva III enter DFU mode.

4, Upgrade Priva III to software V1.

4.1 Find“ CSRBlueSuite 2.5.8” from its installation path on your computer, select “DFUWizard” and click.



Click Next.



Select the first one as below and click Next.

BlueCore Device Firmware Upgrade Wizard

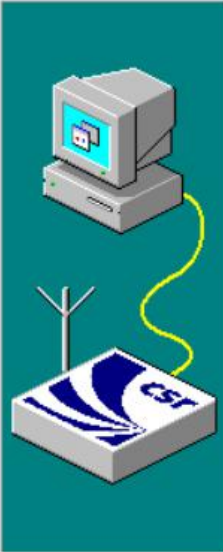
### Connection Type

Please select how the BlueCore module is connected to your computer:

- Universal Serial Bus (USB)
- COM port (RS-232)

To continue, click Next.

< Back   Next >   Cancel   Help



Select the second one as below and click Next.

BlueCore Device Firmware Upgrade Wizard

### Upgrade Action

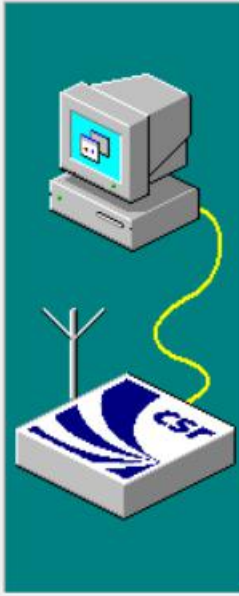
Please select whether you wish to download a new version of firmware or restore a previous version:

- Download a new version of the firmware, saving a copy of the current version first. Any previously saved version will be replaced. (Recommended.)
- Download a new version of the firmware, without first saving a copy of the current version.
- Restore the previous version of the firmware. Use this option if a problem has been encountered after performing a previous upgrade.

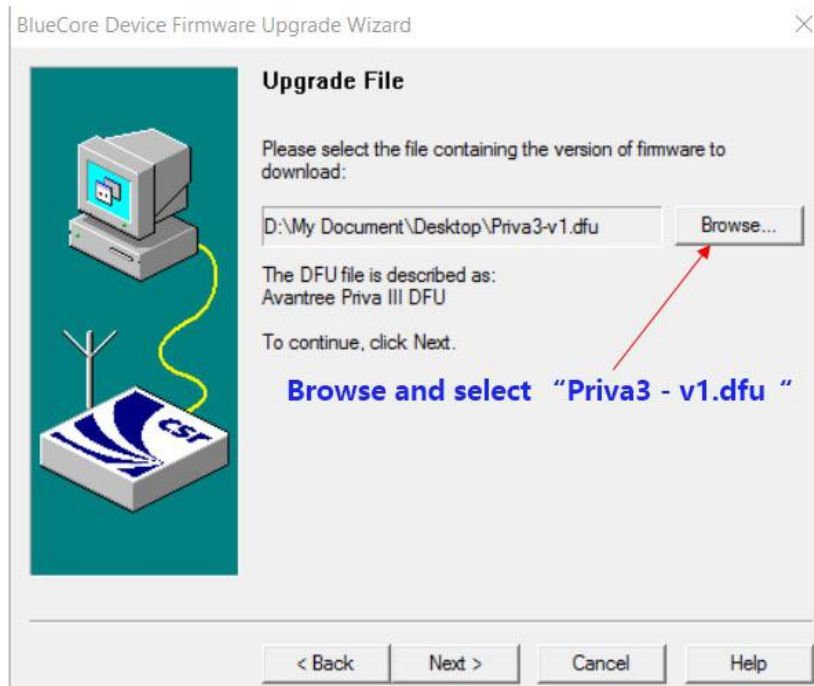
Backup File: C:\Users\PS\AppData... \saved.dfu   Change

The previously saved firmware version is described as:  
LOADER=gdn\_16unified\_fl\_bt4.1\_27d\_1408131222\_ble\_encr  
128 2014-08-13.

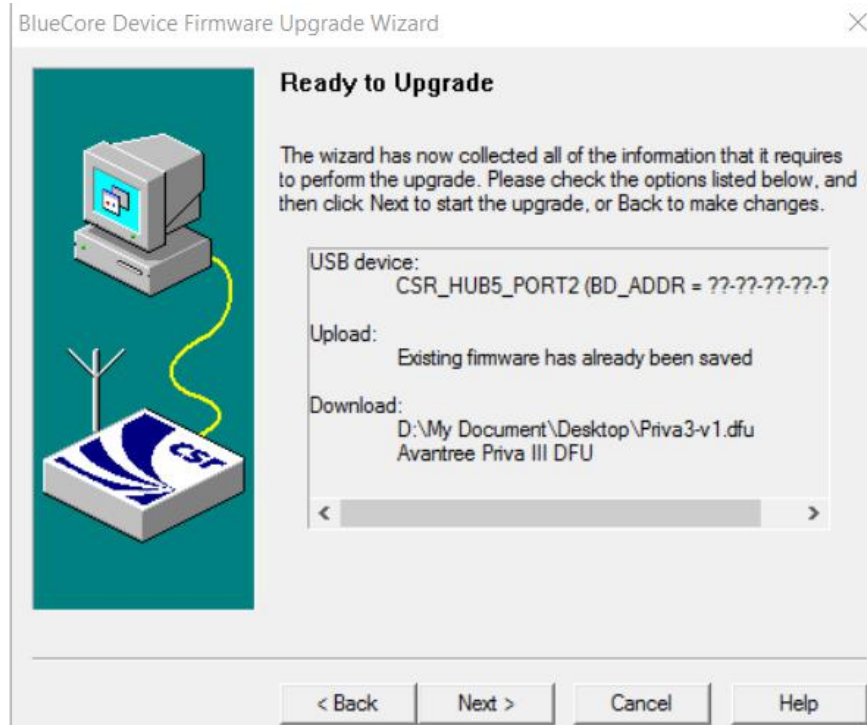
< Back   Next >   Cancel   Help



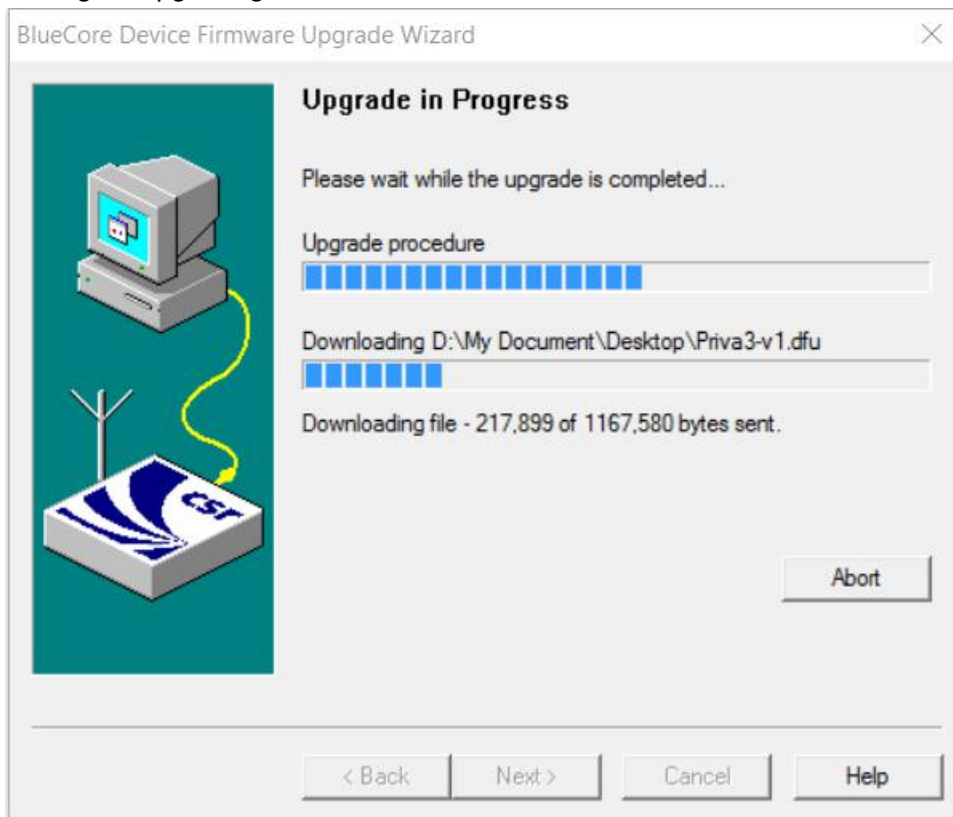
Click "Browse" , select "Priva 3 - v1", then click "Next".



Click "Next"



Waiting for upgrading



After successful upgrade, click "Finish" as below.

At the same time, Priva III enter re-connection mode automatically, LED flashes BLUE once per 2s.

